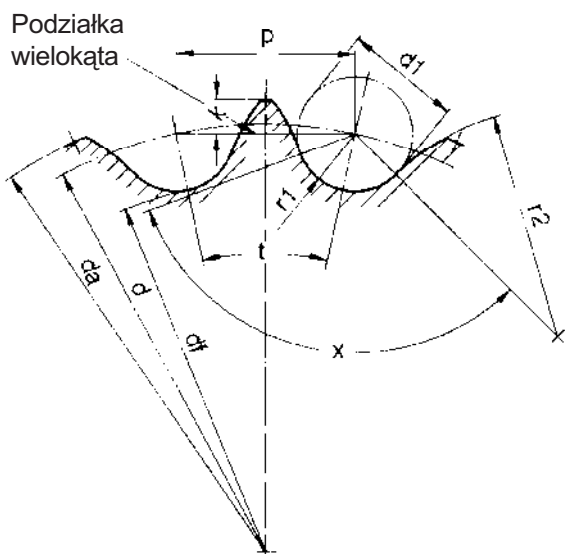


## Konstrukcja łańcuchowego koła



- p podziałka
- d1 max. wymiar wałeczka
- d promień części obwodowej
- df promień
- da promień
- r1 promień dna zęba
- t podziałka kąta
- x kąt boku zęba
- r2 promień boku zęba
- k wysokość zęba nad podziałką wielokątą
- z ilość zębów

Ø średnica koła:

$$d = \frac{p}{\sin \frac{t}{2}} \quad \frac{t}{2} = \frac{180^\circ}{z}$$

Ø podstawa koła:

$$df = d - d1$$

Ø wysokość koła:

$$da \text{ max.} = d + 1.25 \cdot p - d1$$

wysokość zęba:

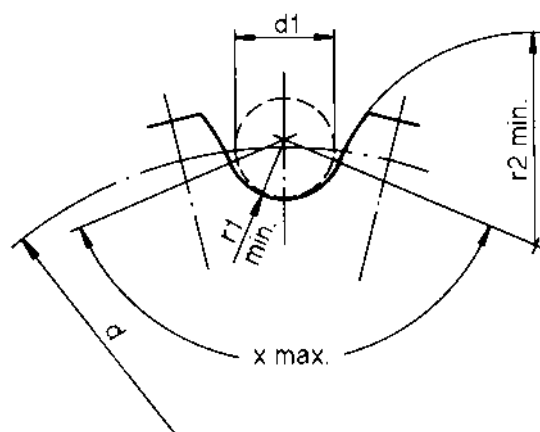
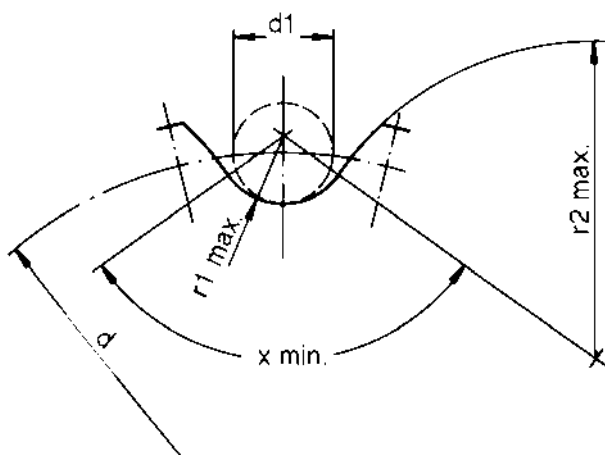
$$k \text{ max.} = 0.625 \cdot p - 0.5 d1 + \frac{0.8}{z} \cdot p$$

$$da \text{ min.} = d \left( 1 - \frac{1.6}{z} \right) \cdot p - d1$$

$$k \text{ min.} = 0.5 \cdot (p - d1)$$

Max. wymiar dna zęba:

Min. wymiar dna zęba:



$$r1 \text{ max.} = 0.505 d1 + 0.069 \sqrt[3]{d1}$$

$$x \text{ min.} = 120^\circ - \frac{90^\circ}{z}$$

$$r2 \text{ max.} = 0.008 d1 (z2 + 180)$$

$$r1 \text{ min.} = 0.505 d1$$

$$x \text{ max.} = 140^\circ - \frac{90^\circ}{z}$$

$$r2 \text{ min.} = 0.12 d1 (z + 2)$$



## Koła łańcuchowe SYSTEM BEA



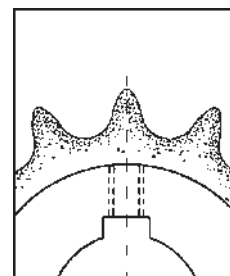
### Zalety:

1. Hartowane zęby (HRC50)
2. Otwór wykonany w tolerancji H7
3. Rowek
4. Dwa otwory dla śrub zabezpieczających

## Koła łańcuchowe SYSTEM BEA

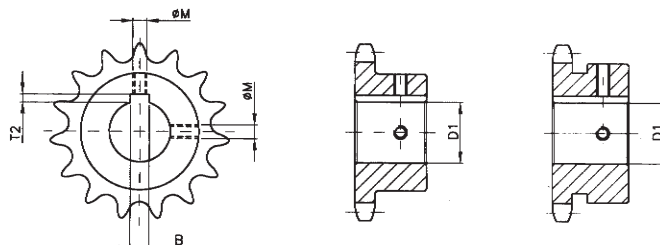
### Jakość:

Wszystkie koła SYSTEMU BEA są wykonane z utwardzonymi zębami przez co wydłuża się ich żywotność co skutkuje lepszą wydajnością i wytrzymałością całej przekładni.



### Zalety SYSTEMU BEA:

Wykonanie wszelkich otworów w kołach (patrz tabelka), zapewnia bardzo szybki montaż, a co za tym idzie, ogranicza do minimum czas przestoju maszyny.



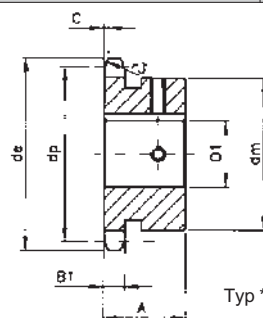
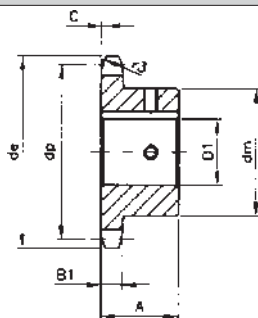
Otwór D1			Szerokość rowka B			Głębokość rowka T2		Metryczny gwint ØM
Ø 10	H7	+0.015 -0	3	H9	+0.025 -0	1.4	+0.10 -0	M4
Ø 12	H7	+0.018 -0	4	H9	+0.030 -0	1.8	+0.10 -0	M4
Ø 14	H7	+0.018 -0	5	H9	+0.030 -0	2.3	+0.10 -0	M4
Ø 15	H7	+0.018 -0	5	H9	+0.030 -0	2.3	+0.10 -0	M4
Ø 16	H7	+0.018 -0	5	H9	+0.030 -0	2.3	+0.10 -0	M4
Ø 18	H7	+0.018 -0	6	H9	+0.030 -0	2.8	+0.10 -0	M5
Ø 19	H7	+0.021 -0	6	H9	+0.030 -0	2.8	+0.10 -0	M5
Ø 20	H7	+0.021 -0	6	H9	+0.030 -0	2.8	+0.10 -0	M5
Ø 22	H7	+0.021 -0	6	H9	+0.030 -0	2.8	+0.10 -0	M5
Ø 24	H7	+0.021 -0	8	H9	+0.036 -0	3.3	+0.20 -0	M6
Ø 25	H7	+0.021 -0	8	H9	+0.036 -0	3.3	+0.20 -0	M6
Ø 28	H7	+0.021 -0	8	H9	+0.036 -0	3.3	+0.20 -0	M6
Ø 30	H7	+0.021 -0	8	H9	+0.036 -0	3.3	+0.20 -0	M6
Ø 32	H7	+0.025 -0	10	H9	+0.036 -0	3.3	+0.20 -0	M8
Ø 35	H7	+0.025 -0	10	H9	+0.036 -0	3.3	+0.20 -0	M8
Ø 38	H7	+0.025 -0	10	H9	+0.036 -0	3.3	+0.20 -0	M8
Ø 40	H7	+0.025 -0	12	H9	+0.043 -0	3.3	+0.20 -0	M10
Ø 42	H7	+0.025 -0	12	H9	+0.043 -0	3.3	+0.20 -0	M10
Ø 45	H7	+0.025 -0	14	H9	+0.043 -0	3.8	+0.20 -0	M12
Ø 48	H7	+0.025 -0	14	H9	+0.043 -0	3.8	+0.20 -0	M12
Ø 50	H7	+0.025 -0	14	H9	+0.043 -0	3.8	+0.20 -0	M12

# Koło łańcuchowe 3/8" x 7/32" (06B-1)

SYSTEM BEA

Materiał

Stal C 43



Kod	Ilość zębów z	D1	de	dp	dm	A
T 74899	10	10 <sup>^</sup>	34.5	30.82	24*	20
T 74900	10	12	34.5	30.82	26*	20
T 74901	10	14	34.5	30.82	29*	20
T 74902	11	10 <sup>^</sup>	37.5	33.80	24*	25
T 74903	11	12	37.5	33.80	26*	25
T 74904	11	14	37.5	33.80	29*	25
T 74905	11	15	37.5	33.80	30*	25
T 74906	11	16	37.5	33.80	31*	25
T 74907	12	10 <sup>^</sup>	40.5	36.80	25	25
T 74908	12	12	40.5	36.80	26*	25
T 74909	12	14	40.5	36.80	29*	25
T 74910	12	15	40.5	36.80	30*	25
T 74911	12	16	40.5	36.80	31*	25
T 72278	13	10 <sup>^</sup>	43.5	39.80	28	25
T 72436	13	12	43.5	39.80	28	25
T 74912	13	14	43.5	39.80	28	25
T 72437	13	15	43.5	39.80	28	25
T 74913	13	16	43.5	39.80	31*	25
T 74914	13	18	43.5	39.80	34*	25
T 72438	14	10 <sup>^</sup>	46.5	42.80	31	25
T 72439	14	12	46.5	42.80	31	25
T 74915	14	14	46.5	42.80	31	25
T 72440	14	15	46.5	42.80	31	25
T 74916	14	16	46.5	42.80	31	25
T 74917	14	18	46.5	42.80	31	25
T 74918	14	19	46.5	42.80	35*	25
T 74919	15	12	49.5	45.81	34	25
T 74920	15	14	49.5	45.81	34	25
T 72441	15	15	49.5	45.81	34	25
T 74921	15	16	49.5	45.81	34	25
T 74922	15	18	49.5	45.81	34	25
T 72442	15	19	49.5	45.81	34	25
T 72443	15	20	49.5	45.81	34	25
T 74923	15	22	49.5	45.81	42*	25
T 74924	15	24	49.5	45.81	42*	25
T 74925	15	25	49.5	45.81	42*	25
T 74926	16	12	52.5	48.82	37	28
T 74927	16	14	52.5	48.82	37	28
T 72444	16	15	52.5	48.82	37	28
T 74928	16	16	52.5	48.82	37	28
T 74929	16	18	52.5	48.82	37	28
T 72445	16	19	52.5	48.82	37	28
T 72446	16	20	52.5	48.82	37	28
T 74930	16	22	52.5	48.82	42*	28

B1	r3	c
5.3	10	1

**UWAGA:**

<sup>^</sup> z piastą i z rowkiem oraz z jednym otworem dla śruby (pod kątem 90°)

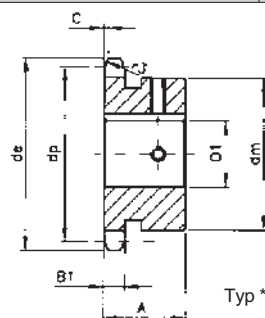
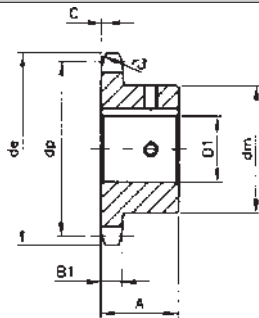
Rozmiary w mm.

# Koło łańcuchowe 3/8" x 7/32" (06B-1)

SYSTEM BEA

Materiał

Stal C 43



Kod	Ilość zębów z	D1	de	dp	dm	A
T 74931	16	24	52.5	48.82	42*	28
T 74932	16	25	52.5	48.82	42*	28
T 74933	17	12	55.5	51.83	40	28
T 74934	17	14	55.5	51.83	40	28
T 72447	17	15	55.5	51.83	40	28
T 74935	17	16	55.5	51.83	40	28
T 74936	17	18	55.5	51.83	40	28
T 72448	17	19	55.5	51.83	40	28
T 72449	17	20	55.5	51.83	40	28
T 74937	17	22	55.5	51.83	40	28
T 74938	17	24	55.5	51.83	46*	28
T 74939	17	25	55.5	51.83	46*	28
T 74940	18	12	58.6	54.85	40	28
T 74941	18	14	58.6	54.85	40	28
T 72450	18	15	58.6	54.85	43	28
T 74942	18	16	58.6	54.85	43	28
T 74943	18	18	58.6	54.85	43	28
T 72451	18	19	58.6	54.85	43	28
T 72452	18	20	58.6	54.85	43	28
T 74944	18	22	58.6	54.85	43	28
T 72453	18	24	58.6	54.85	43	28
T 72454	18	25	58.6	54.85	43	28
T 74945	19	12	61.6	57.87	40	28
T 74946	19	14	61.6	57.87	40	28
T 72455	19	15	61.6	57.87	45	28
T 74947	19	16	61.6	57.87	45	28
T 74948	19	18	61.6	57.87	45	28
T 72456	19	19	61.6	57.87	45	28
T 72457	19	20	61.6	57.87	45	28
T 74949	19	22	61.6	57.87	45	28
T 72458	19	24	61.6	57.87	45	28
T 72459	19	25	61.6	57.87	45	28
T 74950	20	12	64.6	60.89	40	28
T 74951	20	14	64.6	60.89	40	28
T 72460	20	15	64.6	60.89	46	28
T 74952	20	16	64.6	60.89	46	28
T 74953	20	18	64.6	60.89	46	28
T 72461	20	19	64.6	60.89	46	28
T 72462	20	20	64.6	60.89	46	28
T 74954	20	22	64.6	60.89	46	28
T 72463	20	24	64.6	60.89	46	28
T 72464	20	25	64.6	60.89	46	28
T 72465	21	15	67.6	63.91	48	28
T 74955	21	16	67.6	63.91	48	28

B1	r3	c
5.3	10	1

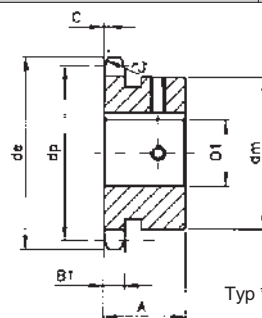
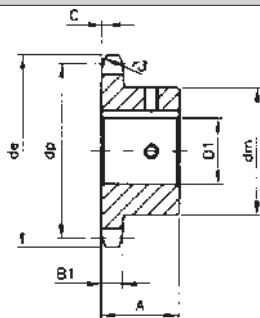
Rozmiary w mm.

# Koło łańcuchowe 3/8" x 7/32" (06B-1)

SYSTEM BEA

Materiał

Stal C 43



Kod	Ilość zębów z	D1	de	dp	dm	A
T 74956	21	18	67.6	63.91	48	28
T 72466	21	19	67.6	63.91	48	28
T 72467	21	20	67.6	63.91	48	28
T 74957	21	22	67.6	63.91	48	28
T 72468	21	24	67.6	63.91	48	28
T 72469	21	25	67.6	63.91	48	28
T 72470	22	15	70.6	66.93	50	28
T 74958	22	16	70.6	66.93	50	28
T 74959	22	18	70.6	66.93	50	28
T 72471	22	19	70.6	66.93	50	28
T 72472	22	20	70.6	66.93	50	28
T 74960	22	22	70.6	66.93	50	28
T 72473	22	24	70.6	66.93	50	28
T 72474	22	25	70.6	66.93	50	28
T 72475	23	15	73.7	69.95	52	28
T 74961	23	16	73.7	69.95	52	28
T 74962	23	18	73.7	69.95	52	28
T 72476	23	19	73.7	69.95	52	28
T 72477	23	20	73.7	69.95	52	28
T 74963	23	22	73.7	69.95	52	28
T 72478	23	24	73.7	69.95	52	28
T 72479	23	25	73.7	69.95	52	28
T 74964	24	16	76.7	72.97	50	28
T 74965	24	18	76.7	72.97	50	28
T 74966	24	19	76.7	72.97	54	28
T 72480	24	20	76.7	72.97	54	28
T 74967	24	22	76.7	72.97	54	28
T 72481	24	24	76.7	72.97	54	28
T 72482	24	25	76.7	72.97	54	28
T 72483	24	28	76.7	72.97	54	28
T 72484	24	30	76.7	72.97	54	28
T 74968	25	16	79.7	76.00	50	28
T 74969	25	18	79.7	76.00	50	28
T 74970	25	19	79.7	76.00	50	28
T 72485	25	20	79.7	76.00	57	28
T 74971	25	22	79.7	76.00	57	28
T 72486	25	24	79.7	76.00	57	28
T 72487	25	25	79.7	76.00	57	28
T 72488	25	28	79.7	76.00	57	28
T 72489	25	30	79.7	76.00	57	28
T 72490	30	20	94.8	91.12	60	30
T 74972	30	22	94.8	91.12	60	30
T 72491	30	24	94.8	91.12	60	30
T 72492	30	25	94.8	91.12	60	30
T 72493	30	28	94.8	91.12	60	30
T 72494	30	30	94.8	91.12	60	30

B1	r3	c
5.3	10	1

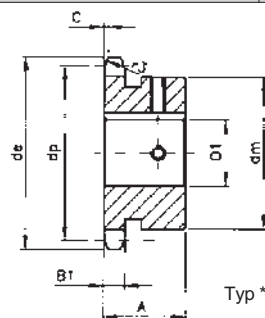
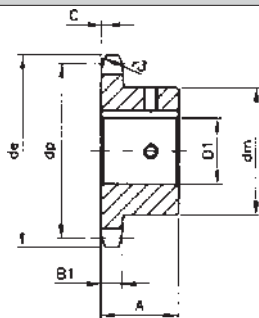
Rozmiary w mm.

# Koło łańcuchowe 1/2" x 5/16" (08B-1)

SYSTEM BEA

Materiał

Stal C 43



Kod	Ilość zębów z	D1	de	dp	dm	A
T 74973	10	12	45.9	41.10	26	25
T 74974	10	14	45.9	41.10	26	25
T 74975	10	15	45.9	41.10	31*	25
T 74976	10	16	45.9	41.10	31*	25
T 74977	11	12	49.9	45.07	29	25
T 74978	11	14	49.9	45.07	29	25
T 74979	11	15	49.9	45.07	31*	25
T 74980	11	16	49.9	45.07	31*	25
T 74981	11	18	49.9	45.07	37*	25
T 74982	11	19	49.9	45.07	37*	25
T 74983	12	12	53.9	49.07	33	28
T 74984	12	14	53.9	49.07	33	28
T 72495	12	15	53.9	49.07	33	28
T 74985	12	16	53.9	49.07	33	28
T 74986	12	18	53.9	49.07	33	28
T 72498	12	19	53.9	49.07	33	28
T 72499	12	20	53.9	49.07	33	28
T 74987	12	22	53.9	49.07	40*	28
T 74988	12	24	53.9	49.07	41*	28
T 74989	12	25	53.9	49.07	42*	28
T 74991	13	12	57.9	53.06	37	28
T 74992	13	14	57.9	53.06	37	28
T 72500	13	15	57.9	53.06	37	28
T 74993	13	16	57.9	53.06	37	28
T 74994	13	18	57.9	53.06	37	28
T 72501	13	19	57.9	53.06	37	28
T 72502	13	20	57.9	53.06	37	28
T 74995	13	22	57.9	53.06	37	28
T 74996	13	24	57.9	53.06	42*	28
T 74997	13	25	57.9	53.06	42*	28
T 74998	13	28	57.9	53.06	45*	28
T 74999	14	12	61.9	57.07	33	25
T 75000	14	14	61.9	57.07	33	25
T 72503	14	15	61.9	57.07	41	25
T 75001	14	16	61.9	57.07	41	25
T 75002	14	18	61.9	57.07	41	25
T 72504	14	19	61.9	57.07	41	25
T 72505	14	20	61.9	57.07	41	25
T 75003	14	22	61.9	57.07	41	28
T 75004	14	24	61.9	57.07	41	28
T 75005	14	25	61.9	57.07	41	28
T 75006	14	28	61.9	57.07	48*	28
T 75007	15	12	65.9	61.09	33	28
T 75008	15	14	65.9	61.09	33	28

B1	r3	c
7.2	13	1.3

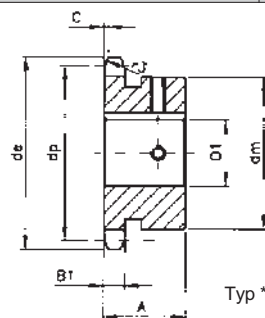
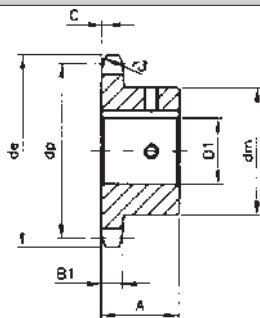
Rozmiary w mm.

# Koło łańcuchowe 1/2" x 5/16" (08B-1)

SYSTEM BEA

Materiał

Stal C 43



Kod	Ilość zębów z	D1	de	dp	dm	A
T 72506	15	15	65.9	61.09	45	28
T 75009	15	16	65.9	61.09	45	28
T 75010	15	18	65.9	61.09	45	28
T 72507	15	19	65.9	61.09	45	28
T 72508	15	20	65.9	61.09	45	28
T 75011	15	22	65.9	61.09	45	28
T 72509	15	24	65.9	61.09	45	28
T 72510	15	25	65.9	61.09	45	28
T 75012	15	28	65.9	61.09	45	28
T 75013	15	30	65.9	61.09	52*	28
T 75014	15	32	65.9	61.09	52*	28
T 72511	16	15	69.9	65.10	50	28
T 75015	16	16	69.9	65.10	50	28
T 75016	16	18	69.9	65.10	50	28
T 72512	16	19	69.9	65.10	50	28
T 72513	16	20	69.9	65.10	50	28
T 75017	16	22	69.9	65.10	50	28
T 72514	16	24	69.9	65.10	50	28
T 72515	16	25	69.9	65.10	50	28
T 75018	16	28	69.9	65.10	50	28
T 75019	16	30	69.9	65.10	50	28
T 75020	16	32	69.9	65.10	57*	28
T 72516	17	15	74.0	69.11	52	28
T 75021	17	16	74.0	69.11	52	28
T 75022	17	18	74.0	69.11	52	28
T 72517	17	19	74.0	69.11	52	28
T 72518	17	20	74.0	69.11	52	28
T 75023	17	22	74.0	69.11	52	28
T 72519	17	24	74.0	69.11	52	28
T 72520	17	25	74.0	69.11	52	28
T 75024	17	28	74.0	69.11	52	28
T 75025	17	30	74.0	69.11	52	28
T 75026	17	32	74.0	69.11	52	28
T 75027	18	16	78.0	73.14	52	28
T 75028	18	18	78.0	73.14	52	28
T 75029	18	19	78.0	73.14	52	28
T 72521	18	20	78.0	73.14	56	28
T 75030	18	22	78.0	73.14	56	28
T 72522	18	24	78.0	73.14	56	28
T 72523	18	25	78.0	73.14	56	28
T 72524	18	28	78.0	73.14	56	28
T 72525	18	30	78.0	73.14	56	28
T 75031	18	32	78.0	73.14	56	28
T 75032	18	35	78.0	73.14	56	28

B1	r3	c
7.2	13	1.3

Rozmiary w mm.

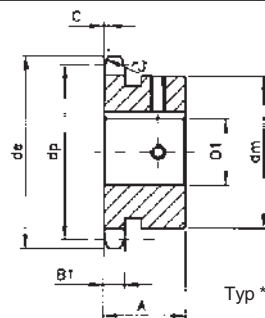
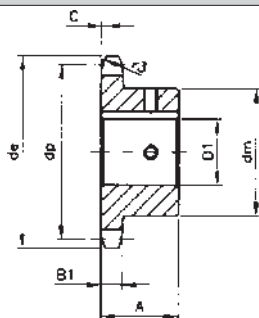


# Koło łańcuchowe 1/2" x 5/16" (08B-1)

SYSTEM BEA

Materiał

Stal C 43



Kod	Ilość zębów z	D1	de	dp	dm	A
T 75033	18	38	78.0	73.14	56	28
T 75034	19	16	82.0	77.16	52	28
T 75035	19	18	82.0	77.16	52	28
T 75036	19	19	82.0	77.16	52	28
T 72526	19	20	82.0	77.16	60	28
T 75037	19	22	82.0	77.16	60	28
T 72527	19	24	82.0	77.16	60	28
T 72528	19	25	82.0	77.16	60	28
T 72529	19	28	82.0	77.16	60	28
T 72530	19	30	82.0	77.16	60	28
T 75038	19	32	82.0	77.16	60	28
T 75039	19	35	82.0	77.16	60	28
T 75040	19	38	82.0	77.16	60	28
T 75041	20	16	86.0	81.19	55	28
T 75042	20	18	86.0	81.19	55	28
T 75043	20	19	86.0	81.19	55	28
T 72531	20	20	86.0	81.19	64	28
T 75044	20	22	86.0	81.19	64	28
T 72532	20	24	86.0	81.19	64	28
T 72533	20	25	86.0	81.19	64	28
T 72534	20	28	86.0	81.19	64	28
T 72535	20	30	86.0	81.19	64	28
T 75045	20	32	86.0	81.19	64	28
T 75046	20	35	86.0	81.19	64	28
T 75047	20	38	86.0	81.19	64	28
T 75048	21	16	90.1	85.22	55	28
T 75049	21	18	90.1	85.22	55	28
T 75050	21	19	90.1	85.22	55	28
T 72536	21	20	90.1	85.22	60	28
T 75051	21	22	90.1	85.22	60	28
T 72537	21	24	90.1	85.22	68	28
T 72538	21	25	90.1	85.22	68	28
T 72539	21	28	90.1	85.22	68	28
T 72540	21	30	90.1	85.22	68	28
T 75052	21	32	90.1	85.22	68	28
T 75053	21	35	90.1	85.22	68	28
T 75054	21	38	90.1	85.22	68	28
T 75055	22	16	94.1	89.24	55	28
T 75056	22	18	94.1	89.24	55	28
T 75057	22	19	94.1	89.24	55	28
T 72541	22	20	94.1	89.24	65	28
T 75058	22	22	94.1	89.24	65	28
T 72542	22	24	94.1	89.24	70	28
T 72543	22	25	94.1	89.24	70	28

B1	r3	c
7.2	13	1.3

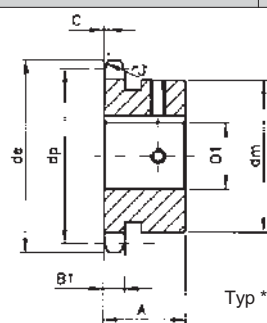
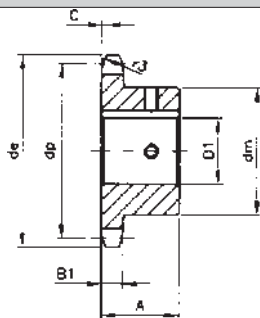
Rozmiary w mm.

# Koło łańcuchowe 1/2" x 5/16" (08B-1)

SYSTEM BEA

Materiał

Stal C 43



Kod	Ilość zębów z	D1	de	dp	dm	A
T 72544	22	28	94.1	89.24	70	28
T 72545	22	30	94.1	89.24	70	28
T 75059	22	32	94.1	89.24	70	28
T 75060	22	35	94.1	89.24	70	28
T 75061	22	38	94.1	89.24	70	28
T 75062	23	19	98.1	93.27	65	28
T 75063	23	20	98.1	93.27	65	28
T 75064	23	22	98.1	93.27	70	28
T 72547	23	24	98.1	93.27	70	28
T 72548	23	25	98.1	93.27	70	28
T 72549	23	28	98.1	93.27	70	28
T 72550	23	30	98.1	93.27	70	28
T 75065	23	32	98.1	93.27	70	28
T 75066	23	35	98.1	93.27	70	28
T 75067	23	38	98.1	93.27	70	28
T 75068	24	19	102.1	97.29	65	28
T 72551	24	20	102.1	97.29	65	28
T 75069	24	22	102.1	97.29	70	28
T 72552	24	24	102.1	97.29	70	28
T 72553	24	25	102.1	97.29	70	28
T 72554	24	28	102.1	97.29	70	28
T 72555	24	30	102.1	97.29	70	28
T 75070	24	32	102.1	97.29	70	28
T 75071	24	35	102.1	97.29	70	28
T 75072	24	38	102.1	97.29	70	28
T 75073	25	19	106.2	101.33	65	28
T 72556	25	20	106.2	101.33	65	28
T 75074	25	22	106.2	101.33	70	28
T 72557	25	24	106.2	101.33	70	28
T 72558	25	25	106.2	101.33	70	28
T 72559	25	28	106.2	101.33	70	28
T 72560	25	30	106.2	101.33	70	28
T 75075	25	32	106.2	101.33	70	28
T 75076	25	35	106.2	101.33	70	28
T 75077	25	38	106.2	101.33	70	28
T 72561	30	25	126.3	121.50	75	30
T 72562	30	28	126.3	121.50	75	30
T 72563	30	30	126.3	121.50	80	30
T 75078	30	32	126.3	121.50	80	30
T 75079	30	35	126.3	121.50	80	30
T 75080	30	38	126.3	121.50	80	30

B1	r3	c
7.2	13	1.3

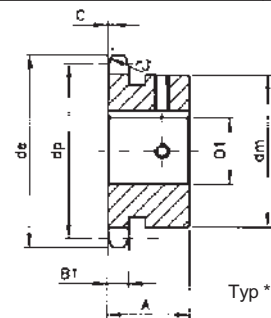
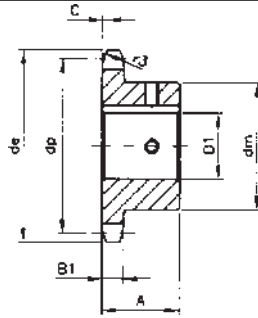
Rozmiary w mm.

# Koło łańcuchowe 5/8" x 3/8" (10B-1)

SYSTEM BEA

Materiał

Stal C 43



Kod	Ilość zębów z	D1	de	dp	dm	A
T 75081	10	15	58.3	51.37	35	25
T 75082	10	16	58.3	51.37	35	25
T 75083	10	18	58.3	51.37	35	25
T 75084	10	19	58.3	51.37	35	25
T 75085	10	20	58.3	51.37	35	25
T 75086	10	24	58.3	51.37	42*	25
T 75087	11	15	63.2	56.34	37	30
T 75088	11	16	63.2	56.34	37	30
T 75089	11	18	63.2	56.34	37	30
T 75090	11	19	63.2	56.34	37	30
T 75091	11	20	63.2	56.34	37	30
T 75092	11	24	63.2	56.34	47*	30
T 75093	11	25	63.2	56.34	47*	30
T 75094	11	28	63.2	56.34	47*	30
T 72564	12	15	68.2	61.34	42	30
T 75095	12	16	68.2	61.34	42	30
T 75096	12	18	68.2	61.34	42	30
T 72565	12	19	68.2	61.34	42	30
T 72566	12	20	68.2	61.34	42	30
T 75097	12	22	68.2	61.34	42	30
T 72567	12	24	68.2	61.34	42	30
T 72568	12	25	68.2	61.34	42	30
T 75099	12	28	68.2	61.34	51*	30
T 75100	12	30	68.2	61.34	51*	30
T 75101	12	32	68.2	61.34	55*	30
T 72569	13	15	73.2	66.32	47	30
T 75102	13	16	73.2	66.32	47	30
T 75103	13	18	73.2	66.32	47	30
T 72570	13	19	73.2	66.32	47	30
T 72571	13	20	73.2	66.32	47	30
T 75104	13	22	73.2	66.32	47	30
T 72572	13	24	73.2	66.32	47	30
T 72573	13	25	73.2	66.32	47	30
T 75105	13	28	73.2	66.32	47	30
T 75106	13	30	73.2	66.32	47	30
T 75107	13	32	73.2	66.32	57*	30
T 72574	14	15	78.2	71.34	52	30
T 75108	14	16	78.2	71.34	52	30
T 75109	14	18	78.2	71.34	52	30
T 72575	14	19	78.2	71.34	52	30
T 72576	14	20	78.2	71.34	52	30
T 75110	14	22	78.2	71.34	52	30
T 72577	14	24	78.2	71.34	52	30
T 72578	14	25	78.2	71.34	52	30

B1	r3	c
9.1	16	1.6

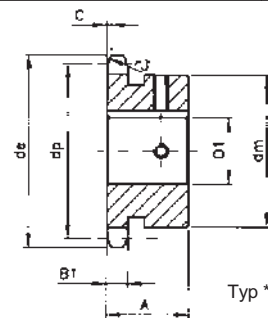
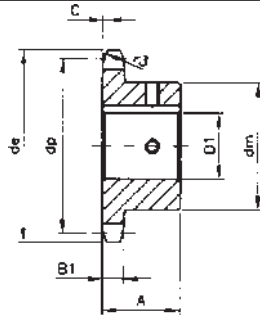
Rozmiary w mm.

# Koło łańcuchowe 5/8" x 3/8" (10B-1)

SYSTEM BEA

Materiał

Stal C 43



Kod	Ilość zębów z	D1	de	dp	dm	A
T 75111	14	28	78.2	71.34	52	30
T 75112	14	30	78.2	71.34	52	30
T 75113	14	32	78.2	71.34	52	30
T 75114	15	19	83.2	76.36	57	30
T 72579	15	20	83.2	76.36	57	30
T 75115	15	22	83.2	76.36	57	30
T 72580	15	24	83.2	76.36	57	30
T 72581	15	25	83.2	76.36	57	30
T 72582	15	28	83.2	76.36	57	30
T 72583	15	30	83.2	76.36	57	30
T 75116	15	32	83.2	76.36	57	30
T 75117	15	35	83.2	76.36	57	30
T 75118	16	19	88.3	81.37	60	30
T 72584	16	20	88.3	81.37	60	30
T 75119	16	22	88.3	81.37	60	30
T 72585	16	24	88.3	81.37	60	30
T 72586	16	25	88.3	81.37	60	30
T 72587	16	28	88.3	81.37	60	30
T 72588	16	30	88.3	81.37	60	30
T 75120	16	32	88.3	81.37	60	30
T 75121	16	35	88.3	81.37	60	30
T 75122	16	38	88.3	81.37	60	30
T 75123	17	19	93.3	86.39	60	30
T 72589	17	20	93.3	86.39	60	30
T 75124	17	22	93.3	86.39	60	30
T 72590	17	24	93.3	86.39	60	30
T 72591	17	25	93.3	86.39	60	30
T 72592	17	28	93.3	86.39	60	30
T 72593	17	30	93.3	86.39	60	30
T 75125	17	32	93.3	86.39	60	30
T 75126	17	35	93.3	86.39	60	30
T 75127	17	38	93.3	86.39	60	30
T 75128	18	19	98.3	91.42	60	30
T 72594	18	20	98.3	91.42	60	30
T 75129	18	22	98.3	91.42	70	30
T 72595	18	24	98.3	91.42	70	30
T 72596	18	25	98.3	91.42	70	30
T 72597	18	28	98.3	91.42	70	30
T 72598	18	30	98.3	91.42	70	30
T 75130	18	32	98.3	91.42	70	30
T 75131	18	35	98.3	91.42	70	30
T 75132	18	38	98.3	91.42	70	30
T 75133	18	40	98.3	91.42	70	30
T 75134	18	42	98.3	91.42	70	30

B1	r3	c
9.1	16	1.6

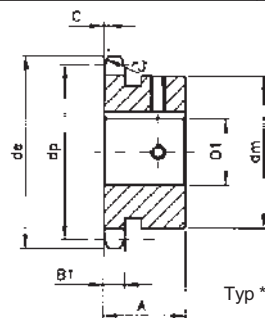
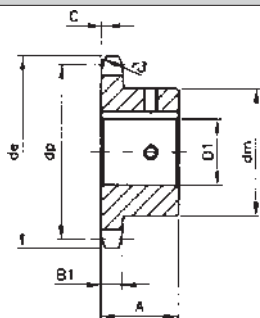
Rozmiary w mm.

# Koło łańcuchowe 5/8" x 3/8" (10B-1)

SYSTEM BEA

Materiał

Stal C 43



Kod	Ilość zębów z	D1	de	dp	dm	A
T 75135	19	19	103.3	96.45	60	30
T 72599	19	20	103.3	96.45	60	30
T 75136	19	22	103.3	96.45	70	30
T 72600	19	24	103.3	96.45	70	30
T 72601	19	25	103.3	96.45	70	30
T 72602	19	28	103.3	96.45	70	30
T 72603	19	30	103.3	96.45	70	30
T 75137	19	32	103.3	96.45	70	30
T 75138	19	35	103.3	96.45	70	30
T 75139	19	38	103.3	96.45	70	30
T 75140	19	40	103.3	96.45	70	30
T 75141	19	42	103.3	96.45	70	30
T 75142	20	19	108.4	101.49	65	30
T 72604	20	20	108.4	101.49	65	30
T 75143	20	22	108.4	101.49	65	30
T 72605	20	24	108.4	101.49	70	30
T 72606	20	25	108.4	101.49	70	30
T 72607	20	28	108.4	101.49	75	30
T 72608	20	30	108.4	101.49	75	30
T 75144	20	32	108.4	101.49	75	30
T 75145	20	35	108.4	101.49	75	30
T 75146	20	38	108.4	101.49	75	30
T 75147	20	40	108.4	101.49	75	30
T 75148	20	42	108.4	101.49	75	30
T 75149	21	19	113.4	106.52	65	30
T 72609	21	20	113.4	106.52	65	30
T 75150	21	22	113.4	106.52	65	30
T 72610	21	24	113.4	106.52	70	30
T 72611	21	25	113.4	106.52	70	30
T 72612	21	28	113.4	106.52	75	30
T 72613	21	30	113.4	106.52	75	30
T 75151	21	32	113.4	106.52	75	30
T 75152	21	35	113.4	106.52	75	30
T 75153	21	38	113.4	106.52	75	30
T 75154	21	40	113.4	106.52	75	30
T 75155	21	42	113.4	106.52	75	30
T 75156	22	19	118.4	111.55	65	30
T 72614	22	20	118.4	111.55	65	30
T 75157	22	22	118.4	111.55	65	30
T 72615	22	24	118.4	111.55	70	30
T 72616	22	25	118.4	111.55	70	30
T 72617	22	28	118.4	111.55	80	30
T 72618	22	30	118.4	111.55	80	30
T 75158	22	32	118.4	111.55	80	30

B1	r3	c
9.1	16	1.6

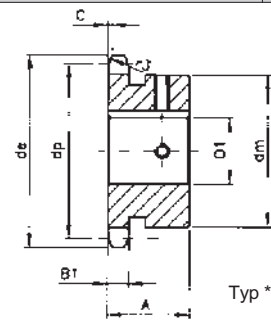
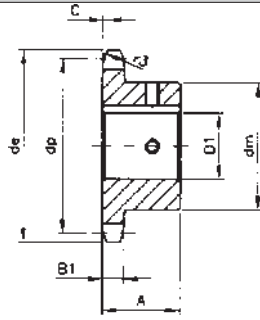
Rozmiary w mm.

# Koło łańcuchowe 5/8" x 3/8" (10B-1)

SYSTEM BEA

Materiał

Stal C 43



Kod	Ilość zębów z	D1	de	dp	dm	A
T 75159	22	35	118.4	111.55	80	30
T 75160	22	38	118.4	111.55	80	30
T 75161	22	40	118.4	111.55	80	30
T 75162	22	42	118.4	111.55	80	30
T 75163	23	19	123.5	116.58	65	30
T 75164	23	20	123.5	116.58	65	30
T 75165	23	22	123.5	116.58	65	30
T 75166	23	24	123.5	116.58	70	30
T 72619	23	25	123.5	116.58	70	30
T 72620	23	28	123.5	116.58	80	30
T 72621	23	30	123.5	116.58	80	30
T 72622	23	32	123.5	116.58	80	30
T 72623	23	35	123.5	116.58	80	30
T 72624	23	38	123.5	116.58	80	30
T 75167	23	40	123.5	116.58	80	30
T 75168	23	42	123.5	116.58	80	30
T 75169	24	19	128.5	121.62	65	30
T 75170	24	20	128.5	121.62	65	30
T 75171	24	22	128.5	121.62	65	30
T 75172	24	24	128.5	121.62	70	30
T 72625	24	25	128.5	121.62	70	30
T 72626	24	28	128.5	121.62	80	30
T 72627	24	30	128.5	121.62	80	30
T 72628	24	32	128.5	121.62	80	30
T 72629	24	35	128.5	121.62	80	30
T 72630	24	38	128.5	121.62	80	30
T 75173	24	40	128.5	121.62	80	30
T 75174	24	42	128.5	121.62	80	30
T 75175	25	19	133.6	126.66	65	30
T 75176	25	20	133.6	126.66	65	30
T 75177	25	22	133.6	126.66	65	30
T 75178	25	24	133.6	126.66	70	30
T 72631	25	25	133.6	126.66	70	30
T 72632	25	28	133.6	126.66	80	30
T 72633	25	30	133.6	126.66	80	30
T 72634	25	32	133.6	126.66	80	30
T 72635	25	35	133.6	126.66	80	30
T 72636	25	38	133.6	126.66	80	30
T 75179	25	40	133.6	126.66	80	30
T 75180	25	42	133.6	126.66	80	30

B1	r3	c
9.1	16	1.6

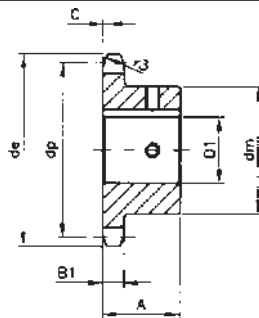
Rozmiary w mm.

# Koło łańcuchowe 3/4" x 7/16" (12B-1)

SYSTEM BEA

Materiał

Stal C 43



Kod	Ilość zębów z	D1	de	dp	dm	A
T 75181	10	19	69.8	61.64	42	30
T 75182	10	20	69.8	61.64	42	30
T 75183	10	24	69.8	61.64	42	30
T 75184	10	25	69.8	61.64	42	30
T 75185	11	19	75.8	67.61	46	35
T 75186	11	20	75.8	67.61	46	35
T 75187	11	24	75.8	67.61	46	35
T 75188	11	25	75.8	67.61	46	35
T 75189	12	19	81.8	73.60	52	35
T 72637	12	20	81.8	73.60	52	35
T 75190	12	22	81.8	73.60	52	35
T 72638	12	24	81.8	73.60	52	35
T 72639	12	25	81.8	73.60	52	35
T 75191	12	28	81.8	73.60	52	35
T 75192	12	30	81.8	73.60	52	35
T 75193	12	32	81.8	73.60	56	35
T 75194	12	35	81.8	73.60	56	35
T 75195	13	19	87.8	79.59	58	35
T 72640	13	20	87.8	79.59	58	35
T 75196	13	22	87.8	79.59	58	35
T 72641	13	24	87.8	79.59	58	35
T 72642	13	25	87.8	79.59	58	35
T 72643	13	28	87.8	79.59	58	35
T 72644	13	30	87.8	79.59	58	35
T 75197	13	32	87.8	79.59	58	35
T 75198	13	35	87.8	79.59	58	35
T 75199	13	38	87.8	79.59	61	35
T 75200	14	19	93.8	85.61	60	35
T 72645	14	20	93.8	85.61	60	35
T 75201	14	22	93.8	85.61	60	35
T 72646	14	24	93.8	85.61	64	35
T 72647	14	25	93.8	85.61	64	35
T 72648	14	28	93.8	85.61	64	35
T 72649	14	30	93.8	85.61	64	35
T 75202	14	32	93.8	85.61	64	35
T 75203	14	35	93.8	85.61	64	35
T 75204	14	38	93.8	85.61	64	35
T 75205	14	40	93.8	85.61	67	35
T 75206	15	19	99.8	91.63	65	35
T 72650	15	20	99.8	91.63	65	35
T 75207	15	22	99.8	91.63	65	35
T 72651	15	24	99.8	91.63	70	35
T 72652	15	25	99.8	91.63	70	35
T 72653	15	28	99.8	91.63	70	35

B1	r3	c
11.1	19	2.0

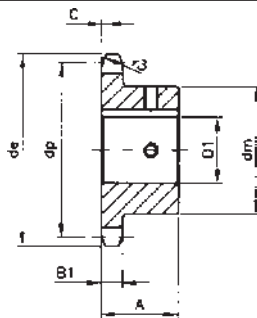
Rozmiary w mm.

# Koło łańcuchowe 3/4" x 7/16" (12B-1)

SYSTEM BEA

Materiał

Stal C 43



Kod	Ilość zębów z	D1	de	dp	dm	A
T 72654	15	30	99.8	91.63	70	35
T 75208	15	32	99.8	91.63	70	35
T 75209	15	35	99.8	91.63	70	35
T 75210	15	38	99.8	91.63	70	35
T 75211	15	40	99.8	91.63	70	35
T 75212	16	19	105.8	97.65	65	35
T 72655	16	20	105.8	97.65	65	35
T 75213	16	22	105.8	97.65	65	35
T 72656	16	24	105.8	97.65	70	35
T 72657	16	25	105.8	97.65	70	35
T 72658	16	28	105.8	97.65	75	35
T 72659	16	30	105.8	97.65	75	35
T 75214	16	32	105.8	97.65	75	35
T 75215	16	35	105.8	97.65	75	35
T 75216	16	38	105.8	97.65	75	35
T 75217	16	40	105.8	97.65	75	35
T 72660	17	25	111.9	103.67	70	35
T 72661	17	28	111.9	103.67	80	35
T 72662	17	30	111.9	103.67	80	35
T 75218	17	32	111.9	103.67	80	35
T 72663	17	35	111.9	103.67	80	35
T 75219	17	38	111.9	103.67	80	35
T 75220	17	40	111.9	103.67	80	35
T 75221	17	42	111.9	103.67	80	35
T 72664	18	25	117.9	109.71	70	35
T 72665	18	28	117.9	109.71	80	35
T 72666	18	30	117.9	109.71	80	35
T 75222	18	32	117.9	109.71	80	35
T 72667	18	35	117.9	109.71	80	35
T 75223	18	38	117.9	109.71	80	35
T 75224	18	40	117.9	109.71	80	35
T 75225	18	42	117.9	109.71	80	35
T 72668	19	25	123.9	115.75	70	35
T 72669	19	28	123.9	115.75	80	35
T 72670	19	30	123.9	115.75	80	35
T 75226	19	32	123.9	115.75	80	35
T 72671	19	35	123.9	115.75	80	35
T 75227	19	38	123.9	115.75	80	35
T 75228	19	40	123.9	115.75	80	35
T 75229	19	42	123.9	115.75	80	35
T 75230	19	45	123.9	115.75	80	35
T 75231	19	48	123.9	115.75	80	35
T 75232	19	50	123.9	115.75	80	35

B1	r3	c
11.1	19	2.0

Rozmiary w mm.

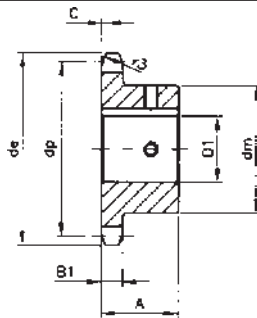


# Koło łańcuchowe 3/4" x 7/16" (12B-1)

SYSTEM BEA

Materiał

Stal C 43



Kod	Ilość zębów z	D1	de	dp	dm	A
T 72672	20	25	130.0	121.78	70	35
T 72673	20	28	130.0	121.78	80	35
T 72674	20	30	130.0	121.78	80	35
T 75233	20	32	130.0	121.78	80	35
T 72675	20	35	130.0	121.78	80	35
T 75234	20	38	130.0	121.78	80	35
T 75235	20	40	130.0	121.78	80	35
T 75236	20	42	130.0	121.78	80	35
T 75237	20	45	130.0	121.78	80	35
T 75238	20	48	130.0	121.78	80	35
T 75239	20	50	130.0	121.78	80	35
T 75240	21	25	136.0	127.82	70	40
T 72676	21	28	136.0	127.82	80	40
T 75241	21	30	136.0	127.82	80	40
T 72677	21	32	136.0	127.82	90	40
T 72678	21	35	136.0	127.82	90	40
T 72679	21	38	136.0	127.82	90	40
T 75242	21	40	136.0	127.82	90	40
T 75243	21	42	136.0	127.82	90	40
T 75244	21	45	136.0	127.82	90	40
T 75245	21	48	136.0	127.82	90	40
T 75246	21	50	136.0	127.82	90	40
T 75247	22	25	142.0	133.86	70	40
T 75248	22	28	142.0	133.86	80	40
T 72680	22	30	142.0	133.86	80	40
T 75249	22	32	142.0	133.86	80	40
T 72681	22	35	142.0	133.86	80	40
T 72682	22	38	142.0	133.86	80	40
T 72683	22	40	142.0	133.86	80	40
T 75250	22	42	142.0	133.86	90	40
T 75251	22	45	142.0	133.86	90	40
T 75252	22	48	142.0	133.86	90	40
T 75253	22	50	142.0	133.86	90	40
T 75254	23	25	148.1	139.90	70	40
T 75255	23	28	148.1	139.90	80	40
T 72684	23	30	148.1	139.90	80	40
T 75256	23	32	148.1	139.90	90	40
T 72685	23	35	148.1	139.90	90	40
T 72686	23	38	148.1	139.90	90	40
T 72687	23	40	148.1	139.90	90	40
T 75257	23	42	148.1	139.90	90	40
T 75258	23	45	148.1	139.90	90	40
T 75259	23	48	148.1	139.90	90	40
T 75260	23	50	148.1	139.90	90	40

B1	r3	c
11.1	19	2.0

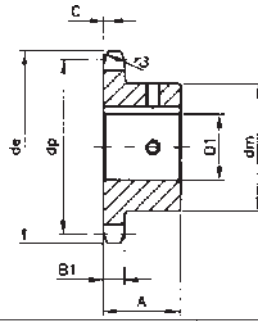
Rozmiary w mm.

# Koło łańcuchowe 3/4" x 7/16" (12B-1)

SYSTEM BEA

Materiał

Stal C 43



Kod	Ilość zębów z	D1	de	dp	dm	A
T 75261	24	25	154.1	145.94	70	40
T 75262	24	28	154.1	145.94	80	40
T 72688	24	30	154.1	145.94	80	40
T 75264	24	32	154.1	145.94	90	40
T 72689	24	35	154.1	145.94	90	40
T 72690	24	38	154.1	145.94	90	40
T 72691	24	40	154.1	145.94	90	40
T 75265	24	42	154.1	145.94	90	40
T 75267	24	45	154.1	145.94	90	40
T 75268	24	48	154.1	145.94	90	40
T 75269	24	50	154.1	145.94	90	40
T 75270	25	25	160.2	152.00	70	40
T 75271	25	28	160.2	152.00	80	40
T 72692	25	30	160.2	152.00	80	40
T 75272	25	32	160.2	152.00	90	40
T 72693	25	35	160.2	152.00	90	40
T 72694	25	38	160.2	152.00	90	40
T 72695	25	40	160.2	152.00	90	40
T 75273	25	42	160.2	152.00	90	40
T 75274	25	45	160.2	152.00	90	40
T 75275	25	48	160.2	152.00	90	40
T 75276	25	50	160.2	152.00	90	40

B1	r3	c
11.1	19	2.0

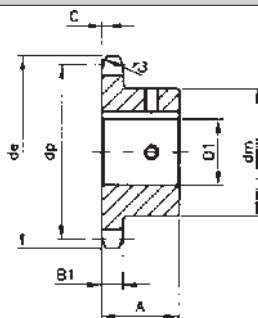
Rozmiary w mm.

# Koło łańcuchowe 1" x 17.02 mm (16B-1)

SYSTEM BEA

Materiał

Stal C 43



Kod	Ilość zębów z	D1	de	dp	dm	A
T 75277	11	25	101.7	90.14	61	40
T 75278	11	28	101.7	90.14	61	40
T 75279	11	30	101.7	90.14	61	40
T 75280	11	32	101.7	90.14	61	40
T 75282	11	35	101.7	90.14	61	40
T 75283	11	38	101.7	90.14	65	40
T 75284	11	40	101.7	90.14	67	40
T 75285	11	42	101.7	90.14	67	40
T 72696	12	25	109.7	98.14	69	40
T 72697	12	28	109.7	98.14	69	40
T 72698	12	30	109.7	98.14	69	40
T 75286	12	32	109.7	98.14	69	40
T 75287	12	35	109.7	98.14	69	40
T 75288	12	38	109.7	98.14	69	40
T 75289	12	40	109.7	98.14	69	40
T 75290	12	42	109.7	98.14	69	40
T 72699	13	25	117.7	106.12	70	40
T 72700	13	28	117.7	106.12	78	40
T 72701	13	30	117.7	106.12	78	40
T 75291	13	32	117.7	106.12	78	40
T 75292	13	35	117.7	106.12	78	40
T 75293	13	38	117.7	106.12	78	40
T 75294	13	40	117.7	106.12	78	40
T 75295	13	42	117.7	106.12	78	40
T 75296	13	45	117.7	106.12	78	40
T 75297	13	48	117.7	106.12	78	40
T 75298	13	50	117.7	106.12	78	40
T 75299	14	25	125.7	114.15	70	40
T 75300	14	28	125.7	114.15	80	40
T 72702	14	30	125.7	114.15	80	40
T 75301	14	32	125.7	114.15	80	40
T 72703	14	35	125.7	114.15	84	40
T 72704	14	38	125.7	114.15	84	40
T 75302	14	40	125.7	114.15	84	40
T 75303	14	42	125.7	114.15	84	40
T 75304	14	45	125.7	114.15	84	40
T 75305	14	48	125.7	114.15	84	40
T 75306	14	50	125.7	114.15	84	40
T 75307	15	25	133.7	122.17	70	40
T 75308	15	28	133.7	122.17	80	40
T 72705	15	30	133.7	122.17	80	40
T 75309	15	32	133.7	122.17	80	40
T 72706	15	35	133.7	122.17	92	40
T 72707	15	38	133.7	122.17	92	40

B1	r3	c
16.2	26	2.5

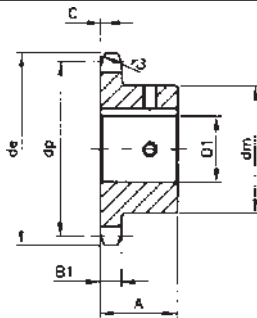
Rozmiary w mm.

# Koło łańcuchowe 1" x 17.02 mm (16B-1)

SYSTEM BEA

Material

Stal C 43



Kod	Ilość zębów z	D1	de	dp	dm	A
T 72708	15	40	133.7	122.17	92	40
T 75310	15	42	133.7	122.17	92	40
T 75311	15	45	133.7	122.17	92	40
T 75312	15	48	133.7	122.17	92	40
T 75313	15	50	133.7	122.17	92	40
T 75314	16	25	141.8	130.20	80	45
T 75315	16	28	141.8	130.20	80	45
T 72709	16	30	141.8	130.20	80	45
T 75316	16	32	141.8	130.20	100	45
T 72710	16	35	141.8	130.20	100	45
T 72711	16	38	141.8	130.20	100	45
T 72712	16	40	141.8	130.20	100	45
T 75317	16	42	141.8	130.20	100	45
T 75318	16	45	141.8	130.20	100	45
T 75319	16	48	141.8	130.20	100	45
T 75320	16	50	141.8	130.20	100	45
T 75321	17	25	149.8	138.22	80	45
T 75322	17	28	149.8	138.22	80	45
T 75323	17	30	149.8	138.22	80	45
T 75324	17	32	149.8	138.22	100	45
T 72713	17	35	149.8	138.22	100	45
T 72714	17	38	149.8	138.22	100	45
T 72715	17	40	149.8	138.22	100	45
T 75325	17	42	149.8	138.22	100	45
T 72716	17	45	149.8	138.22	100	45
T 75326	17	48	149.8	138.22	100	45
T 72717	17	50	149.8	138.22	100	45
T 75327	18	25	157.8	146.28	80	45
T 75328	18	28	157.8	146.28	80	45
T 75329	18	30	157.8	146.28	80	45
T 75330	18	32	157.8	146.28	100	45
T 72718	18	35	157.8	146.28	100	45
T 72719	18	38	157.8	146.28	100	45
T 72720	18	40	157.8	146.28	100	45
T 75331	18	42	157.8	146.28	100	45
T 72721	18	45	157.8	146.28	100	45
T 75332	18	48	157.8	146.28	100	45
T 72722	18	50	157.8	146.28	100	45
T 75333	19	25	165.9	154.33	80	45
T 75334	19	28	165.9	154.33	80	45
T 75335	19	30	165.9	154.33	80	45
T 75336	19	32	165.9	154.33	100	45
T 72723	19	35	165.9	154.33	100	45
T 72724	19	38	165.9	154.33	100	45

B1	r3	c
16.2	26	2.5

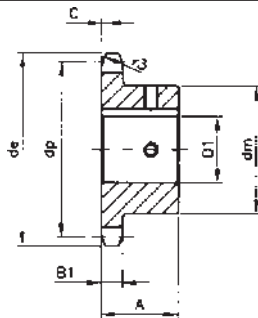
Rozmiary w mm.

# Koło łańcuchowe 1" x 17.02 mm (16B-1)

SYSTEM BEA

Materiał

Stal C 43



Kod	Ilość zębów z	D1	de	dp	dm	A
T 72725	19	40	165.9	154.33	100	45
T 75337	19	42	165.9	154.33	100	45
T 72726	19	45	165.9	154.33	100	45
T 75338	19	48	165.9	154.33	100	45
T 72727	19	50	165.9	154.33	100	45
T 75339	20	25	173.9	162.38	80	45
T 75340	20	28	173.9	162.38	80	45
T 75341	20	30	173.9	162.38	80	45
T 75342	20	32	173.9	162.38	100	45
T 72728	20	35	173.9	162.38	100	45
T 72729	20	38	173.9	162.38	100	45
T 72730	20	40	173.9	162.38	100	45
T 75343	20	42	173.9	162.38	100	45
T 72731	20	45	173.9	162.38	100	45
T 75344	20	48	173.9	162.38	100	45
T 72732	20	50	173.9	162.38	100	45
T 75345	21	25	182.0	170.43	80	50
T 75346	21	28	182.0	170.43	80	50
T 75347	21	30	182.0	170.43	80	50
T 75348	21	32	182.0	170.43	100	50
T 72733	21	35	182.0	170.43	100	50
T 72734	21	38	182.0	170.43	100	50
T 72735	21	40	182.0	170.43	110	50
T 75349	21	42	182.0	170.43	110	50
T 72736	21	45	182.0	170.43	110	50
T 75350	21	48	182.0	170.43	110	50
T 72737	21	50	182.0	170.43	110	50
T 75352	22	25	190.1	178.48	80	50
T 75353	22	28	190.1	178.48	80	50
T 75354	22	30	190.1	178.48	80	50
T 75355	22	32	190.1	178.48	100	50
T 75356	22	35	190.1	178.48	100	50
T 75357	22	38	190.1	178.48	100	50
T 75358	22	40	190.1	178.48	110	50
T 75359	22	42	190.1	178.48	110	50
T 75360	22	45	190.1	178.48	110	50
T 75361	22	48	190.1	178.48	110	50
T 75362	22	50	190.1	178.48	110	50
T 75363	23	25	198.1	186.53	80	50
T 75364	23	28	198.1	186.53	80	50
T 75365	23	30	198.1	186.53	80	50
T 75366	23	32	198.1	186.53	100	50
T 75367	23	35	198.1	186.53	100	50
T 75368	23	38	198.1	186.53	100	50

B1	r3	c
16.2	26	2.5

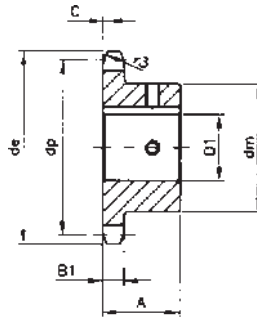
Rozmiary w mm.

# Koło łańcuchowe 1" x 17.02 mm (16B-1)

SYSTEM BEA

Materiał

Stal C 43



Kod	Ilość zębów z	D1	de	dp	dm	A
T 75369	23	40	198.1	186.53	110	50
T 75370	23	42	198.1	186.53	110	50
T 75371	23	45	198.1	186.53	110	50
T 75372	23	48	198.1	186.53	110	50
T 75373	23	50	198.1	186.53	110	50
T 75374	24	25	206.2	194.59	80	50
T 75375	24	28	206.2	194.59	80	50
T 75376	24	30	206.2	194.59	80	50
T 75377	24	32	206.2	194.59	100	50
T 75378	24	35	206.2	194.59	100	50
T 75379	24	38	206.2	194.59	100	50
T 75380	24	40	206.2	194.59	110	50
T 75381	24	42	206.2	194.59	110	50
T 75382	24	45	206.2	194.59	110	50
T 75383	24	48	206.2	194.59	110	50
T 75384	24	50	206.2	194.59	110	50
T 75385	25	25	214.2	202.66	80	50
T 75386	25	28	214.2	202.66	80	50
T 75387	25	30	214.2	202.66	80	50
T 75388	25	32	214.2	202.66	100	50
T 75389	25	35	214.2	202.66	100	50
T 75390	25	38	214.2	202.66	100	50
T 75391	25	40	214.2	202.66	110	50
T 75392	25	42	214.2	202.66	110	50
T 75393	25	45	214.2	202.66	110	50
T 75394	25	48	214.2	202.66	110	50
T 75395	25	50	214.2	202.66	110	50

B1	r3	c
16.2	26	2.5

Rozmiary w mm.