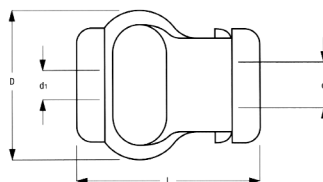
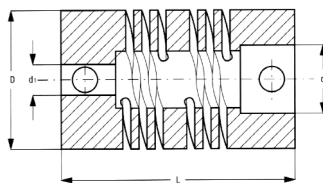


FLEXIBLE COUPLINGS

Complete range of couplings available on www.lika.biz



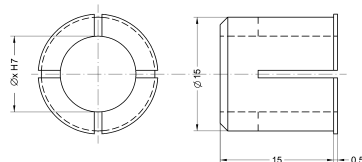
PAN COUPLINGS

Mod.	L	D	d	d1
PAN 6	22	19	6	6
PAN 8	24	25	8	8
PAN 10	24	25	10	10
PAN 12	24	25	12	12

PGF COUPLINGS

Mod.	L	D	d	d1
PGF 6	29	22	6	6
PGF 8	29	22	8	8
PGF 10	29	22	10	10

REDUCING SLEEVES

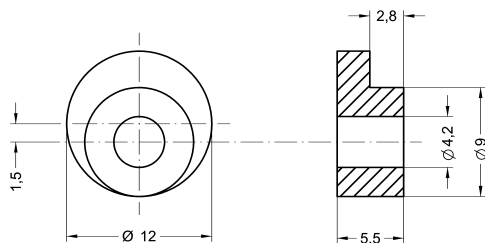


BR1 REDUCING SLEEVES

BR1-12	Ø 12mm h7
BR1-10	Ø 10mm h7
BR1-9.52	Ø 9.52mm h7
BR1-8	Ø 8mm h7
BR1-6	Ø 6mm h7

FIXING CLAMPS

See mounting instructions on page 78

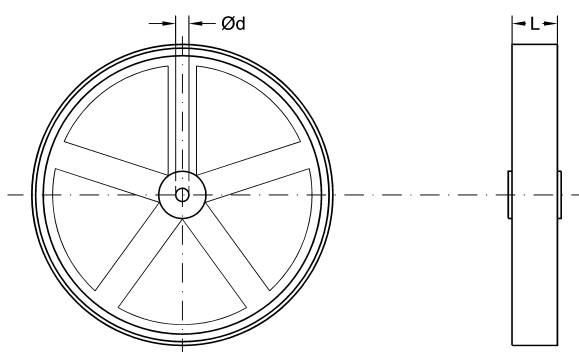


KIT LKM-386 is supplied as a set of 3 clamps, screws and nuts.

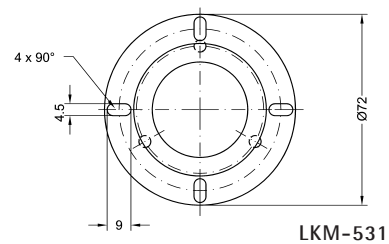
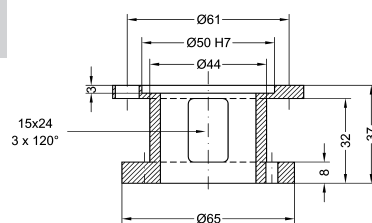
METRIC WHEELS

METRIC WHEELS

Mod.	Circ.	Superficie/Surface	Ø d	L
RM200GZ	200 mm	rubber (knurled)	6 mm	12 mm
RM500G	500 mm	rubber (smooth)	8 mm	24 mm
RM500Z	500 mm	metal (knurled)	8 mm	24 mm

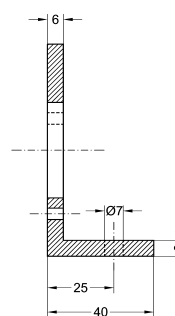
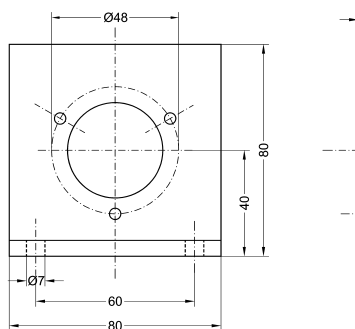


MOUNTING BELLS - BRACKETS



LKM-531

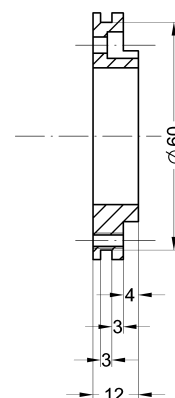
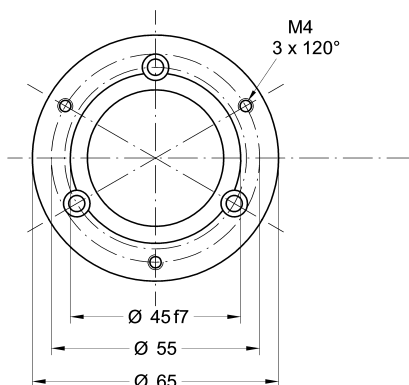
Combine with I58S, I65 and Ax58S



LKM-391

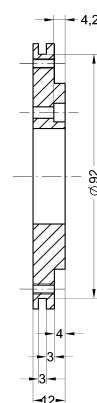
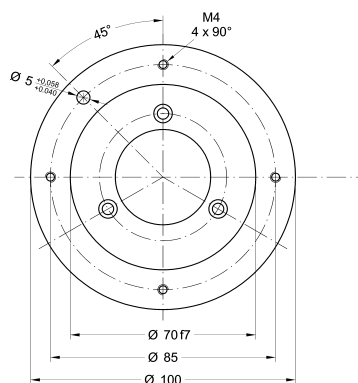
Combine with I58S, I65 and Ax58S

ADAPTING FLANGES



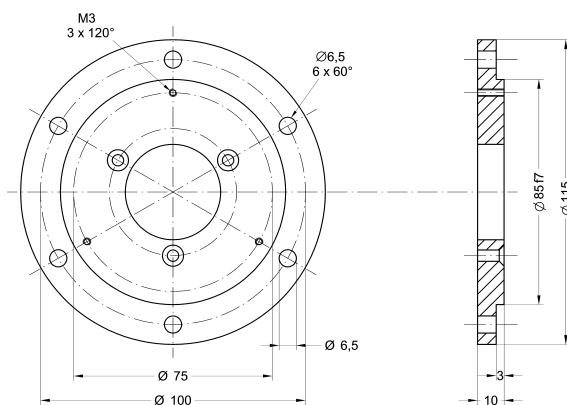
LKM-949

Adapts the Ax58S series to the old AS6, AM6 series



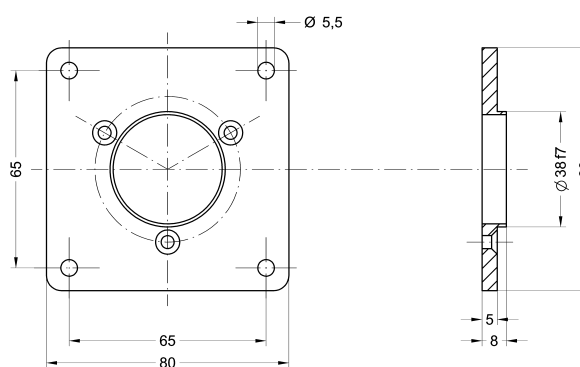
LKM-963

Adapts the Ax58S series to the old AS1, AM1 series



LKM-458

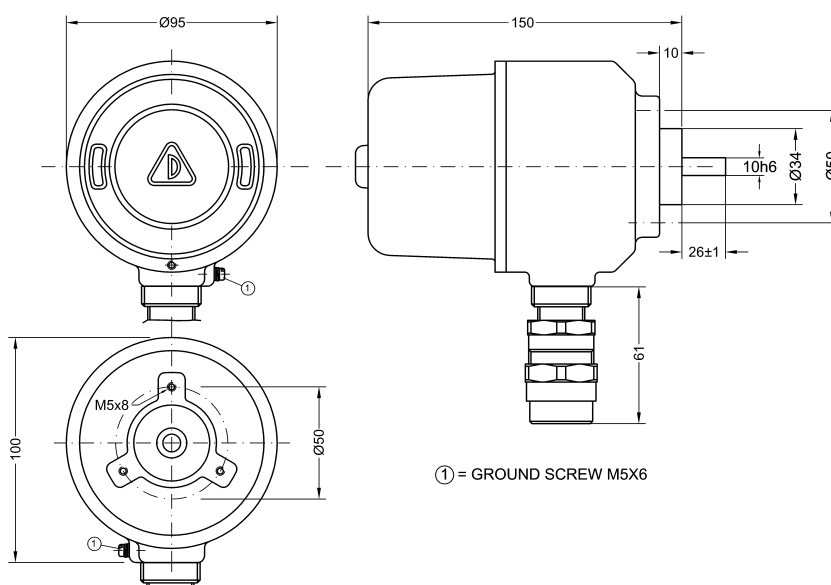
RE0444 adapting flange



LKM-205

Combine with I58S, I65, Ax58S

EEx HOUSING



Encoder housing according to EEx d IIB + H2T6