

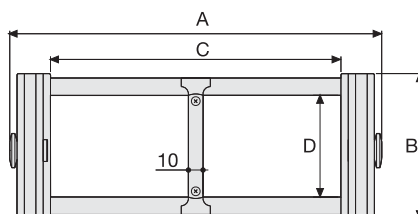
# Serie Heavy

# SR309B

## Nylon Cable Chain with un-screwable aluminium rods

### Inner height (D) 70 mm

Strong double share Sideband & Frame construction with large anti-friction triple-pin. Alu-rod frames are un-screwable from inner and outer radius. As standard the chain comes with frames every second link, on request with frames every link. Vertical and horizontal separator systems are available.



### Separator

- Unassembled	Part.no S309C
- Assembled	Part.no S309CMC

### Pin

Part.no PG309H

### Technical characteristics when self-supported

Speed	8 m/s
Acceleration	40 m/s <sup>2</sup>

For higher requirements please consult our technical dept.

A mm	B mm	C mm	D mm	R mm	Weight/m kg	Chain Part Number
156	100	100	70	150-200-250-300-350-400-500-600	4,20	SR309B100 □ *
206	100	150	70	150-200-250-300-350-400-500-600	4,40	SR309B150 □ *
256	100	200	70	150-200-250-300-350-400-500-600	4,55	SR309B200 □ *
306	100	250	70	150-200-250-300-350-400-500-600	4,70	SR309B250 □ *
356	100	300	70	150-200-250-300-350-400-500-600	4,85	SR309B300 □ *
456	100	400	70	150-200-250-300-350-400-500-600	5,20	SR309B400 □ *
C+56	100	.....	70	150-200-250-300-350-400-500-600		SR309B □ □ □ □ **

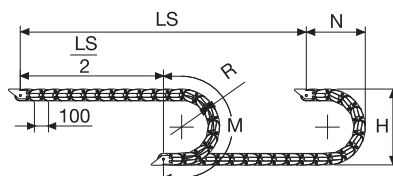
\*Complete the code by inserting the value of the radius (R): Ex. SR309B150 □

Where: 1=150 2=200; 3=250; 4=300; 5=350; 6=400; 7=500; 8=800

\*\*Complete the code by inserting the value of the quote C and the radius (R): Ex. SR309B □ □ □ □

Chain equipped with aluminium rods every pitch: complete the code by inserting the letter D.

Ex. SR309B1502 □



Length of chain (L)  
Half travel distance ( $\frac{LS}{2}$ )  
plus length of curve (M)

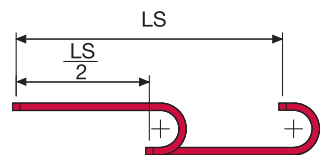
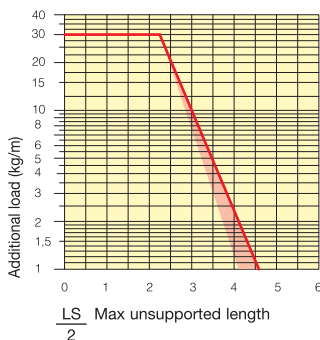
$$L = \frac{LS}{2} + M$$

R mm	H mm	N mm	M mm
150	406	300	675
200	506	350	830
250	606	400	985
300	706	455	1145
350	806	500	1300
400	906	555	1460
500	1106	650	1770
600	1306	750	2085



## Self-Supporting Capacity Diagram

The maximum length of the self-supporting capacity ( $\frac{LS}{2}$ ) in relationship to the weight of the cables and hoses contained per linear metre.



The red marking in the diagram area considers the difference of weight between various widths of chains assembled with rods every second pitch.

For applications with  $\frac{LS}{2}$  and weights not included in the area of the diagram showing self-supporting capacity, verify the possible use of support rollers (see page 30).

## End Brackets

The end brackets set allows the two ends of the chain to be attached to the equipment. Set complete with tiewrap clamps available on request.

### Nylon Type

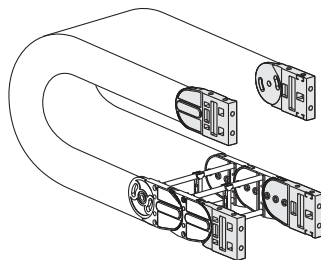
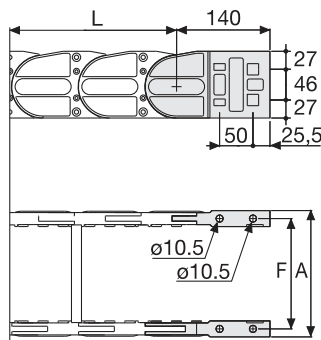


Fig. A  
The chain can be fixed frontally, inner or outer radius. (Fig A)



Chain Type	F mm
SR309B100	129
SR309B150	179
SR309B200	229
SR309B250	279
SR309B300	329
SR309B400	429
Special widths F=A-27	

### Nylon Type Part Numbers

Complete Set Assembled Chain Type	End Brackets Set
SR309B...	AN309KM

Complete Set Unassembled Chain Type	End Brackets Set
SR309B...	AN309K

### Bright Zinc Plated Steel Type\*\*\*

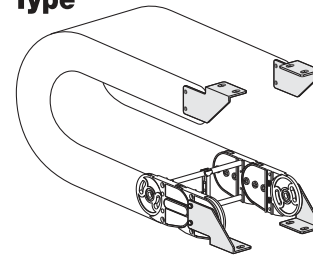
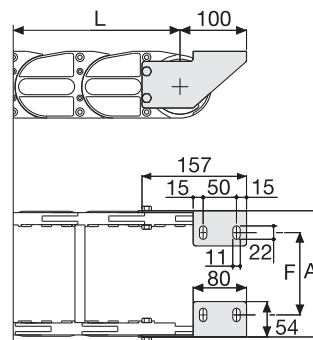


Fig. B  
Chain fixed outside the radius. (Fig B)  
See end brackets mounting variations page 31.



Chain Type	F mm
SR309B100	87
SR309B150	137
SR309B200	187
SR309B250	237
SR309B300	287
SR309B400	387
Special widths F=A-69	

### Bright Zinc Plated Steel Type Part Numbers

Complete Set Assembled Chain Type	End Brackets Set
SR309B...	A309KM □**

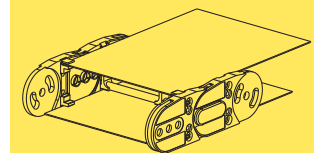
Complete Set Unassembled Chain Type	End Brackets Set
SR309B...	A309K □**

Tiewrap Clamp
Assembl. SFCT309B □□□ *KM
Unassembl. SFCT309B □□□ *K

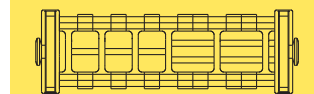
\* Inner width (C)  
\*\* 1=Pos.1; 2=Pos.2; 3=Pos.3  
\*\*\* Available on request in stainless steel

## Serie Heavy

## SR309B Nylon Cable Chain with un-screwable aluminium rods



Steel laminar cover.



Supplementary movable separators.

## Version with aluminium draw plates



On request available with aluminium draw plates

Example Part Number:  
SR309T□□□\*□□□\*\*

\* Inner width (C)  
\*\* Bending radius (R)

For further information please consult Brevetti Stendalto's Technical Office