

Serie Heavy

SR310T

Nylon Cable Chain

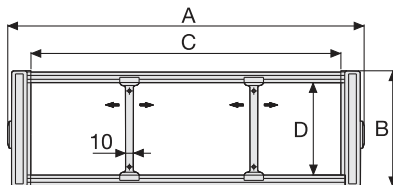
with un-screwable aluminium draw plates

Inner height (D) 112 mm

Strong double share Sideband & Frame construction with three large anti-friction single-pin/bush.

Alu-draw frames are mounted on every link and are un-screwable from inner and outer radius.

Vertical and horizontal separator systems are available.



Separator

- Unassembled	Part.no S310TCF9
- Assembled	Part.no S310TCF9MC

Pin

Part.no B310-PG310

Technical characteristics when self-supported

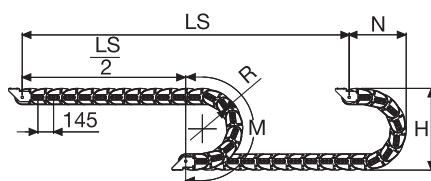
Speed	4 m/s
Acceleration	20 m/s ²

For higher requirements please consult our technical dept.

A mm	B mm	C mm	D mm	R mm	Weight/m kg	Chain Part Number
260	150	200	112	200-300-400-500-600-700-750	7,15	SR310T200□□□*
360	150	300	112	200-300-400-500-600-700-750	7,60	SR310T300□□□*
460	150	400	112	200-300-400-500-600-700-750	8,05	SR310T400□□□*
560	150	500	112	200-300-400-500-600-700-750	8,50	SR310T500□□□*
660	150	600	112	200-300-400-500-600-700-750	9,00	SR310T600□□□*
C+60	150	112	200-300-400-500-600-700-750		SR310T□□□□□**

*Complete the code by inserting the value of the radius (R): Ex. SR310T200 □□□

**Complete the code by inserting the value of the quote C and the radius (R): Ex. SR310T □□□□□



R mm	H mm	N mm	M mm
200	565	420	920
300	765	525	1235
400	965	625	1550
500	1165	720	1860
600	1365	820	2175
700	1565	920	2490
750	1665	970	2650

Length of chain (L)

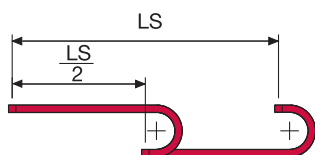
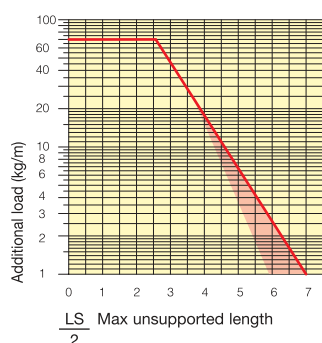
Half travel distance ($\frac{LS}{2}$)
plus length of curve (M)

$$L = \frac{LS}{2} + M$$



Self-Supporting Capacity Diagram

The maximum length of the self-supporting capacity ($\frac{LS}{2}$) in relationship to the weight of the cables and hoses contained per linear metre.



The red marking in the diagram area considers the difference of weight between various widths of chain.

For applications with $\frac{LS}{2}$ and weights not included in the area of the diagram showing self-supporting capacity, verify the possible use of support rollers (see page 30).

End Brackets ***

The end brackets set allows the two ends of the chain to be attached to the equipment.

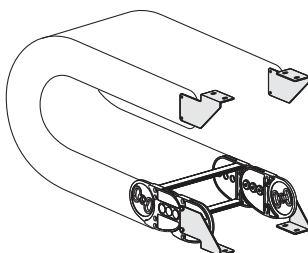
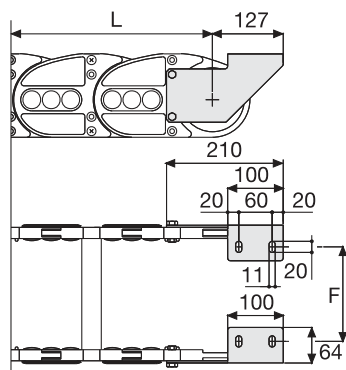


Fig. A
Chain fixed outside the radius. (Fig A)
See end brackets mounting variations page 31.



Chain Type	F mm
SR310T200	180
SR310T300	280
SR310T400	380
SR310T500	480
SR310T600	580
Special widths F=A-80	

Bright Zinc Plated Steel Type Part Numbers

Complete Set Assembled	
Chain Type	End Brackets Set
SR310T...	A310KM □ **

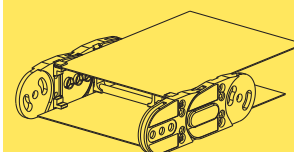
Complete Set Unassembled	
Chain Type	End Brackets Set
SR310T...	A310K □ **

** 1=Pos.1; 2=Pos.2; 3=Pos.3

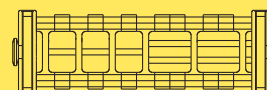
*** Available on request in stainless steel

Serie Heavy

SR310T Nylon Cable Chain with un-screwable aluminium draw plates



Steel laminar cover.



Supplementary movable separators.

For further information please consult Brevetti Stendalto's Technical Office