

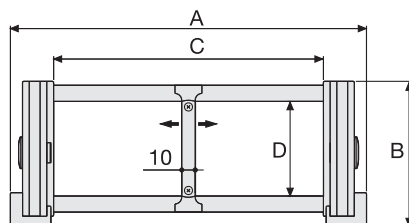
## Serie Sliding

# SR319B

## Nylon Sliding Cable Chain with un-screwable aluminium rods

### Inner height (D) 70 mm

Strong double share Sideband & Frame construction with large anti-friction triple pin. The chain features screwed-on interchangeable sliding skids to offer durability even with high speed and loads. Aluminium rods are removable from inner and outer radius side. As standard the chain comes with rods every second link, on request with rods every link. Separation systems are available.



### Separator

- Unassembled	Part.no S309C
- Assembled	Part.no S309CMC

### Pin

Part.no PG319

### Sliding skid

Part.no PAT319

### Technical characteristics

Speed	4 m/s
Acceleration	13 m/s <sup>2</sup>

For higher requirements please consult our technical dept.

A mm	B mm	C mm	D mm	R mm	Weight/m kg	Chain Part Number
164	107	100	70	200-250-300-350-400-500	4,25	SR319B100 □ *
214	107	150	70	200-250-300-350-400-500	4,45	SR319B150 □ *
264	107	200	70	200-250-300-350-400-500	4,60	SR319B200 □ *
314	107	250	70	200-250-300-350-400-500	4,75	SR319B250 □ *
364	107	300	70	200-250-300-350-400-500	4,90	SR319B300 □ *
464	107	400	70	200-250-300-350-400-500	5,25	SR319B400 □ *
C+64	107	.....	70	200-250-300-350-400-500		SR319B □ □ □ □ **

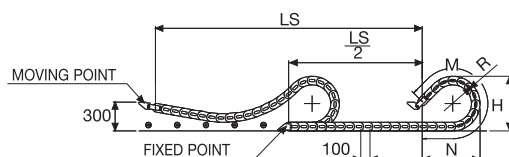
\*Complete the code by inserting the value of the radius (R): Ex. SR319B150 □

Where: 2=200; 3=250; 4=300; 5=350; 6=400; 7=500

\*\*Complete the code by inserting the value of the quote C and the radius (R): Ex. SR319B 1 1 1 1

Chain equipped with aluminium rods every pitch: complete the code by inserting the letter D.

Ex. SR319B1502 D



Length of chain (L)

Half travel distance ( $\frac{LS}{2}$ )

plus length of curve (M)

$$L = \frac{LS}{2} + M$$

R mm	H mm	N mm	M mm
200	506	595	1345
250	606	765	1780
300	706	940	2220
350	806	1110	2655
400	906	1280	3095
500	1106	1625	3970



## End Brackets

The end brackets set allows the two ends of the chain to be attached to the equipment. One set includes two pivoting end brackets to be installed at the moving point and two standard steel end brackets to be installed at the fixed point.

### Bright Zinc Plated Steel Movable Type\*\*\* (moving point)

### Bright Zinc Plated Steel Type\*\*\* (fixed point)

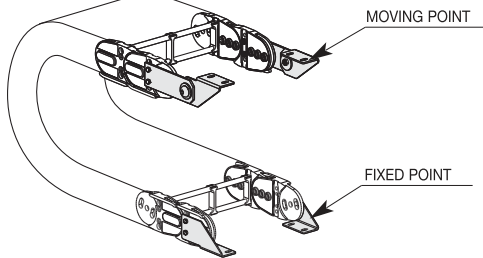
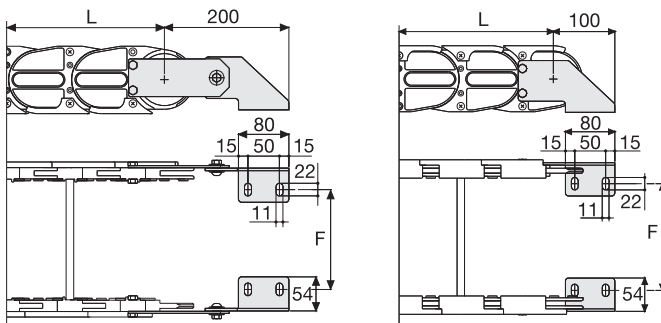


Fig. A  
Chain fixed outside the radius. (Fig A)



Chain Type	F mm
SR319B100	76
SR319B150	126
SR319B200	176
SR319B250	226
SR319B300	276
SR319B400	376
Special widths F=A-88	

## Bright Zinc Plated Steel Type Part Numbers

Chain	End Brackets
Type	Set
SR319B...	A319KM

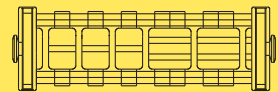
Chain	End Brackets
Type	Set
SR319B...	A319K

\*\*\* Available on request in stainless steel

## Serie Sliding

# SR319B

Nylon Sliding Cable Chain  
with un-screwable  
aluminium rods



Supplementary movable  
separators.

3

## Version with aluminium draw plates

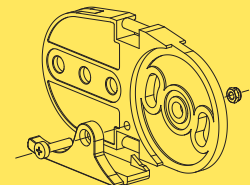


On request available with  
aluminium draw plates

Example Part Number:  
SR319T□□□\*□□□\*\*

\* Inner width (C)

\*\* Bending radius (R)



Sliding skid

For further information please  
consult Brevetti Stendalto's  
Technical Office